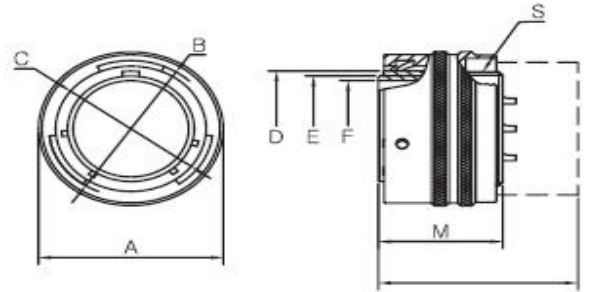


MIL-DTL-26482 Series I

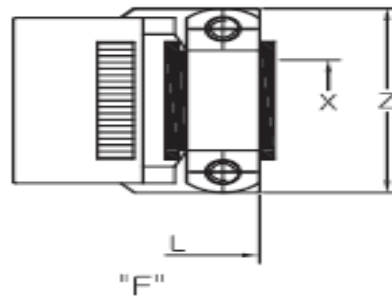
Connector Dimensions

KD3116 Class A, E, F, J & P
MS3116 Class A, E, F, J & P
Straight Plug



Termination Assembly

Shell size	$\varnothing A$ max	$\varnothing B$ +0.13 -0.15	$\varnothing C$ +0.13 -0.03	$\varnothing D$ +0.13 -0.15	$\varnothing E$ +0.03 -0.13	$\varnothing F$ min	M ± 0.13	S THD-2A
8	19.86	14.63	12.22	10.11	9.07	7.42	21.10	7/16-28UNEF
10	23.52	17.70	15.29	13.36	12.32	10.39	21.10	9/16-24UNEF
12	26.49	22.12	19.33	17.14	15.17	13.25	21.10	11/16-24UNEF
14	30.05	25.27	22.48	20.32	18.34	16.46	21.10	13/16-20UNEF
16	33.15	28.45	25.65	23.49	21.52	19.61	21.10	15/16-20UNEF
16	35.33	31.62	28.65	26.03	24.06	21.69	21.10	1 1/16-18UNEF
20	38.69	34.80	32.00	29.21	27.23	25.07	24.90	1 3/16-18UNEF
22	42.06	37.97	35.18	32.36	30.41	28.22	24.90	1 5/16-18UNEF
24	45.13	41.25	38.35	35.56	33.58	31.42	26.40	1 7/16-18UNEF



Class	E, F, J, P			A			E	F	J	P	
	X ± 0.25	Y max	Z max	L max	U min	V THD-2A	L min	L max	L max	L max	W min
8	3.18	15.44	21.03	36.68	7.54	1/2-28 UNEF	33.73	48.41	57.68	35.10	8.05
10	4.78	18.64	22.63	36.68	10.69	5/8-24 UNEF	33.73	48.41	57.68	35.10	11.02
12	7.92	21.79	25.81	36.68	13.67	3/4-20 UNEF	33.73	48.41	61.24	35.10	13.92
14	9.53	24.99	28.95	36.68	16.54	7/8-20 UNEF	33.73	48.41	66.01	35.10	17.09
16	12.70	28.19	30.56	36.68	19.99	1 -20 UNEF	33.73	51.99	74.75	35.10	20.27
16	15.68	31.34	37.31	36.68	22.33	1 3/16-18 UNEF	33.73	55.32	80.57	35.10	22.63
20	15.68	34.54	37.31	43.89	25.76	1 3/16-18 UNEF	36.91	57.15	91.69	40.67	26.01
22	19.05	37.69	42.06	43.89	28.53	1 7/16-18 UNEF	36.91	57.15	95.66	40.67	29.18
24	20.32	40.89	44.45	44.15	31.98	1 7/16-18 UNEF	38.35	58.72	101.22	42.85	32.36