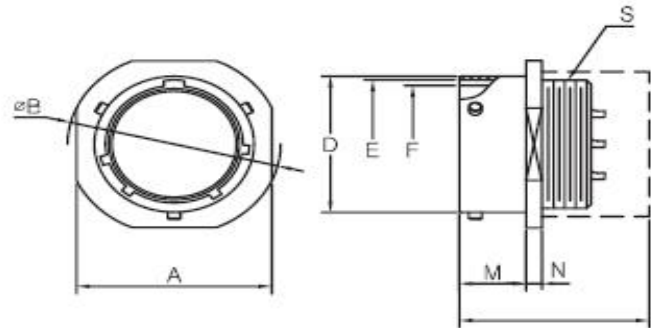


MIL-DTL-26482 Series I

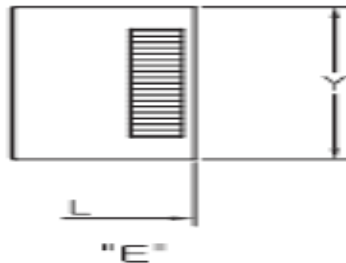
Connector Dimensions

KD3111 Class A, E, F, J & P
MS3111 Class A, E, F, J & P
Cable Connecting Plug



Termination Assembl

Shell size	□A	∅B	∅D	∅E	∅F	M	N	S
	max	±0.51	+0.03 -0.13	+0.13 -0.15	+0.13 -0.03	+0.79	±0.41	THD-2A
8	21.03	23.63	12.01	10.46	9.19	10.16	2.39	7/16-28UNEF
10	24.23	26.97	14.99	13.72	12.45	10.16	2.39	9/16-24UNEF
12	26.59	29.36	19.05	17.50	15.42	10.16	2.39	11/16-24UNEF
14	28.96	31.75	22.22	20.68	18.59	10.16	2.39	13/16-20UNEF
16	31.34	34.14	25.40	23.65	21.77	10.16	2.39	15/16-20UNEF
18	33.73	36.53	28.56	26.39	24.43	10.16	2.39	1 1/16-18UNEF
20	36.91	39.67	31.75	29.57	27.61	13.59	2.92	1 3/16-18UNEF
22	40.06	42.88	34.92	32.74	30.78	13.59	2.92	1 5/16-18UNEF
24	43.16	46.02	38.10	35.92	33.96	14.17	2.92	1 7/16-18UNEF



"E"

Class	E, F, J, P			A			E	F	J	P	
	X ±0.25	Y max	Z max	L max	U min	V THD-2A				L max	L max
8	3.18	15.44	21.03	36.11	7.54	1/2-28 UNEF	33.73	48.82	57.66	36.91	6.05
10	4.78	18.64	22.63	36.11	10.69	5/8-24 UNEF	33.73	48.82	57.66	36.91	11.02
12	7.92	21.79	25.81	36.11	13.87	3/4-20 UNEF	33.73	48.82	61.24	36.91	13.92
14	9.53	24.99	28.98	36.11	16.84	7/8-20 UNEF	33.73	48.82	66.01	36.91	17.09
16	12.70	28.19	30.56	36.11	19.99	1 -20 UNEF	33.73	51.99	74.75	36.91	20.27
18	15.88	31.34	37.31	36.11	22.33	1 3/16-18 UNEF	33.73	52.78	80.57	36.91	22.83
20	15.88	34.54	37.31	43.26	25.76	1 3/16-18 UNEF	36.89	59.54	91.69	42.47	26.01
22	19.05	37.69	42.06	44.83	28.83	1 7/16-18 UNEF	36.89	59.54	95.66	42.47	29.18
24	20.32	40.89	44.45	44.83	31.98	1 7/16-18 UNEF	40.49	61.11	101.22	44.04	32.36